

Local - Lease

Description

Commercial corner with facade to the streets Francos Rodriguez and Jerónima Llorente 1. It is in a privileged location, with a high pedestrian traffic as it is part of a very commercial ecosystem.

The local has a very unique aesthetic, with a canopy over the entrance, recreates the style of the old inns, giving it great presence also thanks to its extraordinary corner façade.

Good communication by public transportation with subway and bus stops nearby.

Features

- ❖ Good Condition.
- ❖ More than 12 meters of corner façade.
- ❖ Air conditioning (heat/cool).
- ❖ Five bathrooms.
- ❖ Storage.

Certificates

Consume

E


Emissions


F


Economic data


Available surface	278 sqm
Rent	tbc
Indoor Parking	No
Outdoor Parking	No
Community	tbc
I.B.I.	tbc
T.R.U.	tbc

Transport

Estrecho (L1)

3, 64, 66, 124, 128

M-30, M-40

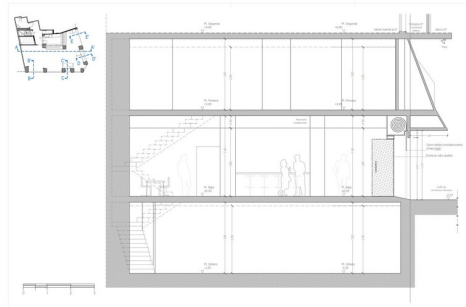
20 minutes

Floor	Module	Surface	€/sqm month	Availabity	Use
-1	Basement	90,00	tbc	Immediate	Retail
00	Ground Floor	90,00	tbc	Immediate	Retail
01	1st Floor	98,05	tbc	Immediate	Retail

Property



Section Plan



Location

